

---

## CERTIFICATE OF ANALYSIS

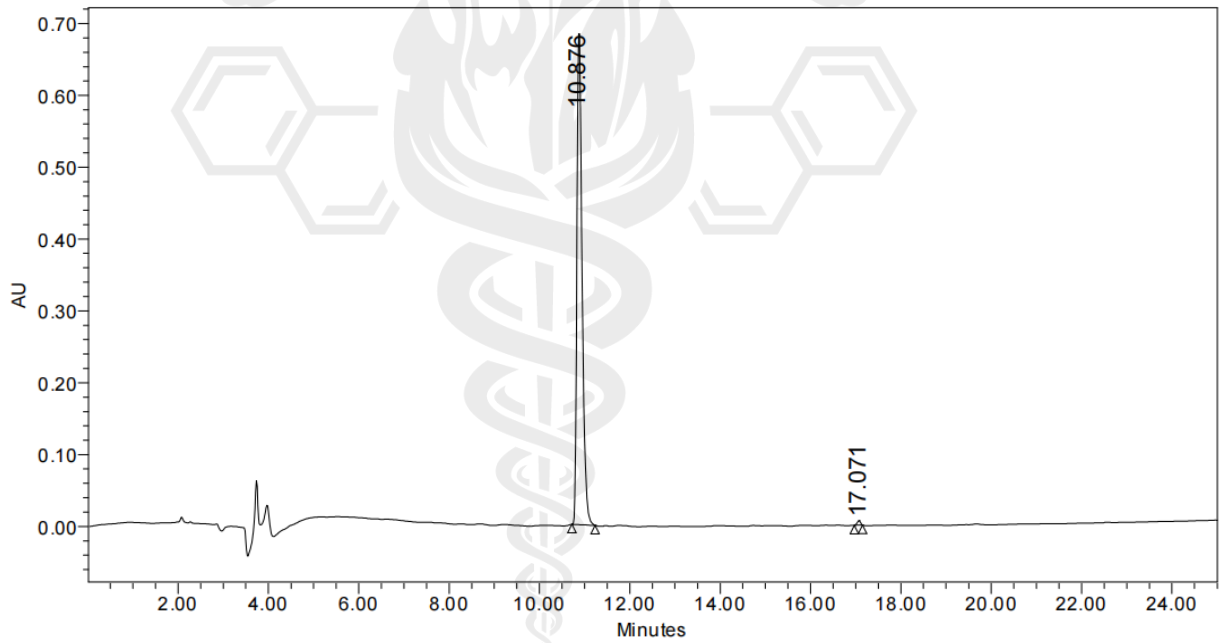
<b>Product Name</b>	BPC-157	
<b>Sequence</b>	H-Gly-Glu-Pro-Pro-Pro-Gly-Lys-Pro-Ala-Asp-Asp-Ala-Gly -Leu-Val-OH	
<b>Dissolution condition</b>	10%ACN+90%H2O	
<b>CAS NO.</b>	137525-51-0	
<b>Batch</b>	BPCE124	
<b>Molecular Weight (MW)</b>	1419.54±1.0	
<b>Storage</b>	-20°C	
<b>Test Items</b>	<b>Specifications</b>	<b>Results</b>
<b>Purity by HPLC</b>	≥99.0%	99.43%
<b>Endotoxin</b>	< 50.0EU/mg	Conforms
<b>Moisture content</b>	≤10.0%	4.1%
<b>Acetic acid content</b>	≤15.0%	3.9%
<b>Appearance</b>	White to off-white lyophilized powder	Conforms
<b>Quantity</b>	10.0mg/vial	120vials
<b>Certified by: QA</b>	_____ Date	_____ 06/12/2024

Note: this product is intended for research use only; not for diagnostic or human use.

SOVEREIGN HEALTH  
AND PERFORMANCE

### Sample Information

Name : BPC-157  
Cas No : 137525-51-0  
Sequence : H-Gly-Glu-Pro-Pro-Pro-Gly-Lys-Pro-Ala-Asp-Asp-Ala-Gly-Leu-Val-OH  
Pump A : 0.1% Trifluoroacetic in 100% Water  
Pump B : 0.1% Trifluoroacetic in 100% Acetonitrile  
Total Flow : 1ml/min  
Wavelength : 220nm  
Analytical column type : SHIMADZU Inertsil ODS-SP (4.6\*250mm\*5um)  
Inj. Volume : 10ul  
Time Module Action Value  
0.00 Pumps B.Conc 5  
25.00 Pumps B.Conc 65  
25.01 Pumps B.Conc 100

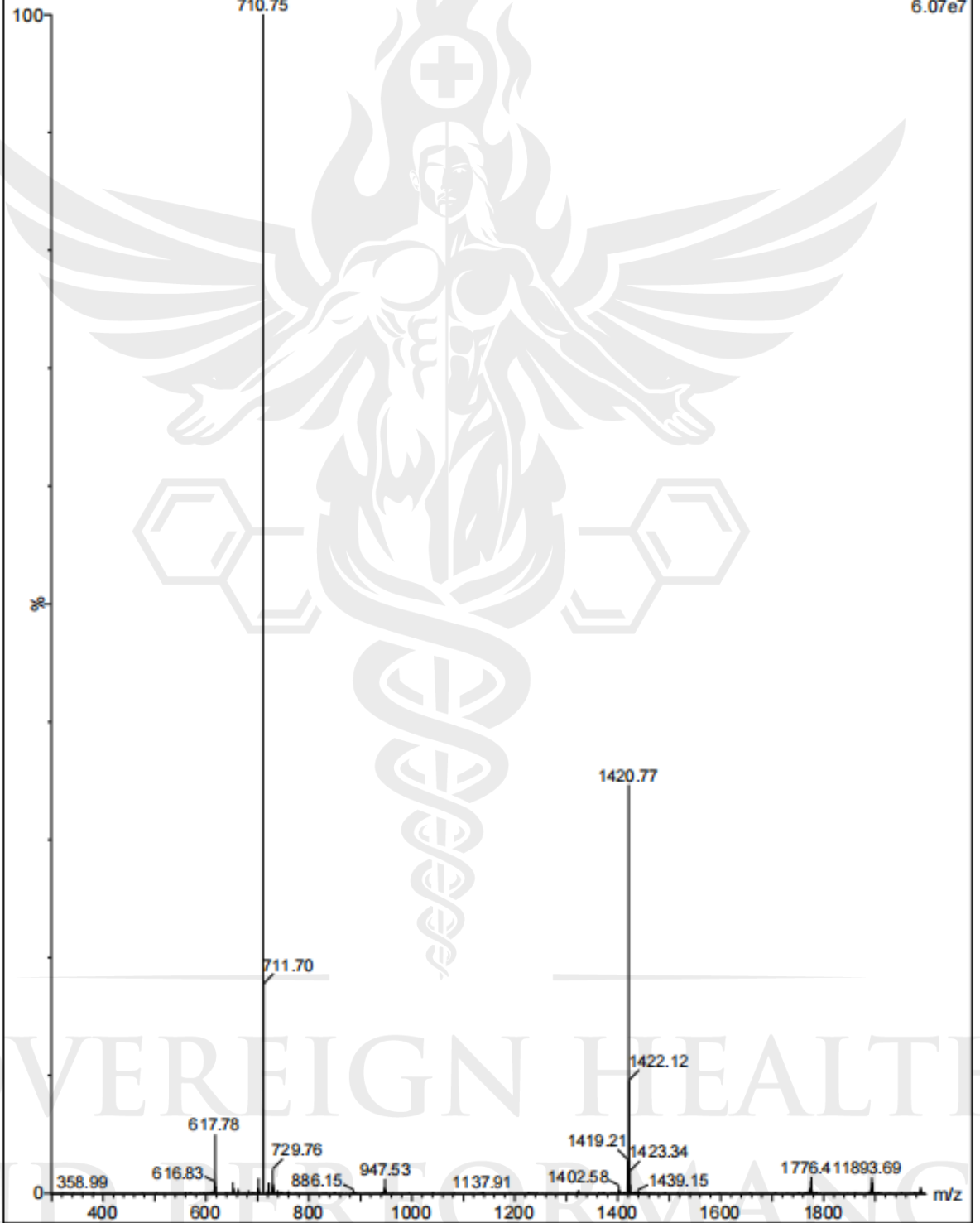


	RT	Area	% Area	Height
1	10.876	5428186	99.43	693397
2	17.071	31031	0.57	6166

SOVE HEALTH  
AND PERFORMANCE

BPC-157 23 (0.425)

Scan ES+  
6.07e7



SOVEREIGN HEALTH  
AND PERFORMANCE