

## CERTIFICATE OF ANALYSIS

**Product Name** BPC-157 and Thymosin- $\beta$ -4-blend

**Sequence** BPC-157:  
H-Gly-Glu-Pro-Pro-Pro-Gly-Lys-Pro-Ala-Asp-Asp-Ala-Gly-Leu-Val-OH  
Thymosin- $\beta$ -4:  
Ac-Ser-Asp-Lys-Pro-Asp-Met-Ala-Glu-Ile-Glu-Lys-Phe-Asp-Lys-Ser-Lys-Leu-Lys-Lys-Thr-Glu-Thr-Gln-Glu-Lys-Asn-Pro-Leu-Pro-Ser-Lys-Glu-Thr-Ile-Glu-Gln-Glu-Lys-Gln-Ala-Gly-Glu-Ser-OH

**Dissolution condition** 10%ACN+90%H<sub>2</sub>O

**CAS NO.** 137525-51-0, 77591-33-4

**Batch** BPCTHYE124

**Molecular Weight (MW)** 1419.54 $\pm$ 1.0, 4963.50 $\pm$ 1.0

**Storage** -20°C

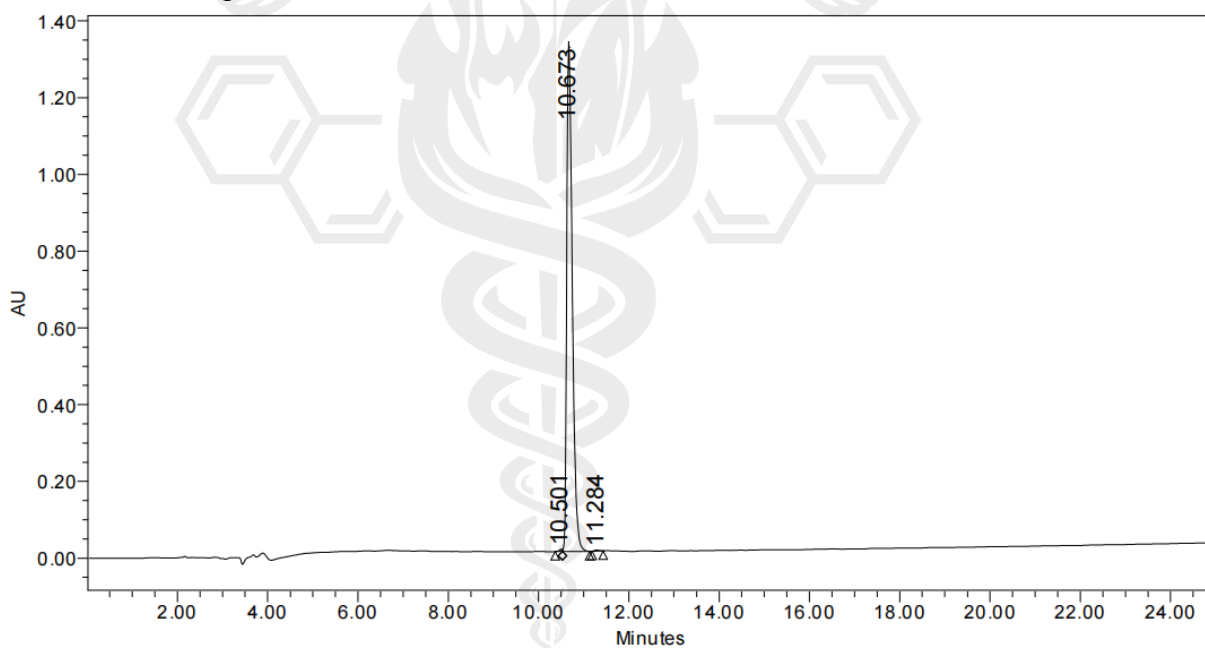
Test Items	Specifications	Results
Purity by HPLC	$\geq 99.0\%$	99.59% (BPC-157) 99.49% (Thymorelin- $\beta$ -4)
Endotoxin	< 50.0EU/mg	Conforms
Moisture content	$\leq 10.0\%$	3.2%
Acetic acid content	$\leq 15.0\%$	2.3%
Appearance	White to off-white lyophilized powder	Conforms
Quantity	120vials (1.0+10.0mg/vial)	120vials
Certified by: QA	Date	05/19/2024

Note: this product is intended for research use only; not for diagnostic or human use.

### Sample Information

Name : BPC-157  
Cas No : 137525-51-0  
Sequence : H-Gly-Glu-Pro-Pro-Pro-Gly-Lys-Pro-Ala-Asp-Asp-Ala-Gly-Leu-Val-OH  
Pump A : 0.1% Trifluoroacetic in 100% Water  
Pump B : 0.1% Trifluoroacetic in 100% Acetonitrile  
Total Flow : 1ml/min  
Wavelength : 220nm  
Analytical column type : SHIMADZU Inertsil ODS-SP (4.6\*250mm\*5um)  
Inj. Volume : 10ul

Time	Module	Action	Value
0.00	Pumps	B.Conc	5
25.00	Pumps	B.Conc	65
25.01	Pumps	B.Conc	100



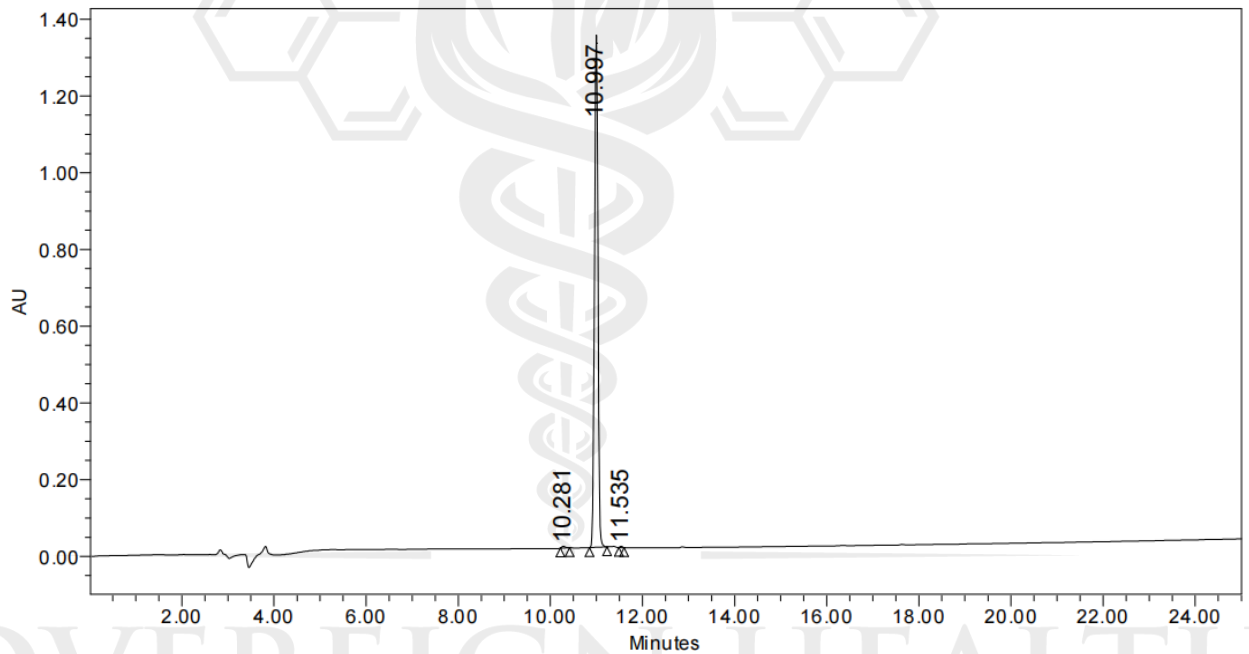
	RT	Area	% Area	Height
1	10.501	27704	0.24	5375
2	10.673	11268294	99.59	1335306
3	11.284	18972	0.17	2523

SOVE HEALTH  
AND PERFORMANCE

### Sample Information

Name : Thymosin-  $\beta$ -4  
Cas No : 77591-33-4  
Sequence : Ac-Ser-Asp-Lys-Pro-Asp-Met-Ala-Glu-Ile-Glu-Lys-Phe-Asp-Lys-Ser-Lys-Leu-Lys-Lys-Thr-Glu-Thr-Gln-Glu-Lys-Asn-Pro-Leu-Pro-Ser-Lys-Glu-Thr-Ile-Glu-Gln-Glu-Lys-Gln-Ala-Gly-Glu-Ser-OH  
Pump A : 0.1% Trifluoroacetic in 100% Water  
Pump B : 0.1% Trifluoroacetic in 100% Acetonitrile  
Total Flow : 1ml/min  
Wavelength : 220nm  
Analytical column type : SHIMADZU Inertsil ODS-SP (4.6\*250mm\*5um)  
Inj. Volume : 20ul

Time	Module	Action	Value
0.00	Pumps	B.Conc	5
25.00	Pumps	B.Conc	65
25.01	Pumps	B.Conc	100



	RT	Area	% Area	Height
1	10.281	23630	0.34	4343
2	10.997	6835319	99.49	1319547
3	11.535	11366	0.17	3111

BPC-157 6 (0.092)

Scan ES+  
1.14e7



SOVEREIGN HEALTH  
AND PERFORMANCE

THYMOSIN-TEBA-4 23 (0.425)

Scan ES+  
1.92e6

