

CERTIFICATE OF ANALYSIS

Product Name BPC-157 and Thymosin- β -4 and Ipamorelin-blend

Sequence BPC-157:
H-Gly-Glu-Pro-Pro-Pro-Gly-Lys-Pro-Ala-Asp-Asp-Ala-Gly-Leu-Val-OH
Thymosin- β -4:
Ac-Ser-Asp-Lys-Pro-Asp-Met-Ala-Glu-Ile-Glu-Lys-Phe-Asp-Lys-Ser-Lys-Leu-Lys-Lys-Thr-Glu-Thr-Gln-Glu-Lys-Asn-Pro-Leu-Pro-Ser-Lys-Glu-Thr-Ile-Glu-Gln-Glu-Lys-Gln-Ala-Gly-Glu-Ser-OH
Ipamorelin: Aib-His-D-2-Nal-D-Phe-Lys-NH₂

Dissolution condition 10%ACN+90%H₂O

CAS NO. 137525-51-0, 77591-33-4, 170851-70-4

Batch BPCTHYIPAE124

Molecular Weight (MW) 1419.54 \pm 1.0, 4963.50 \pm 1.0, 711.85 \pm 1.0

Storage -20°C

Test Items	Specifications	Results
Purity by HPLC	\geq 99.0%	99.59% (BPC-157) 99.49% (Thymosin- β -4) 99.89% (Ipamorelin)
Endotoxin	< 50.0EU/mg	Conforms
Moisture content	\leq 10.0%	4.6%
Acetic acid content	\leq 15.0%	6.5%

Appearance White to off-white lyophilized powder Conforms

Quantity 120vials (1.0+10.0+1.0 mg/vial) 120vials

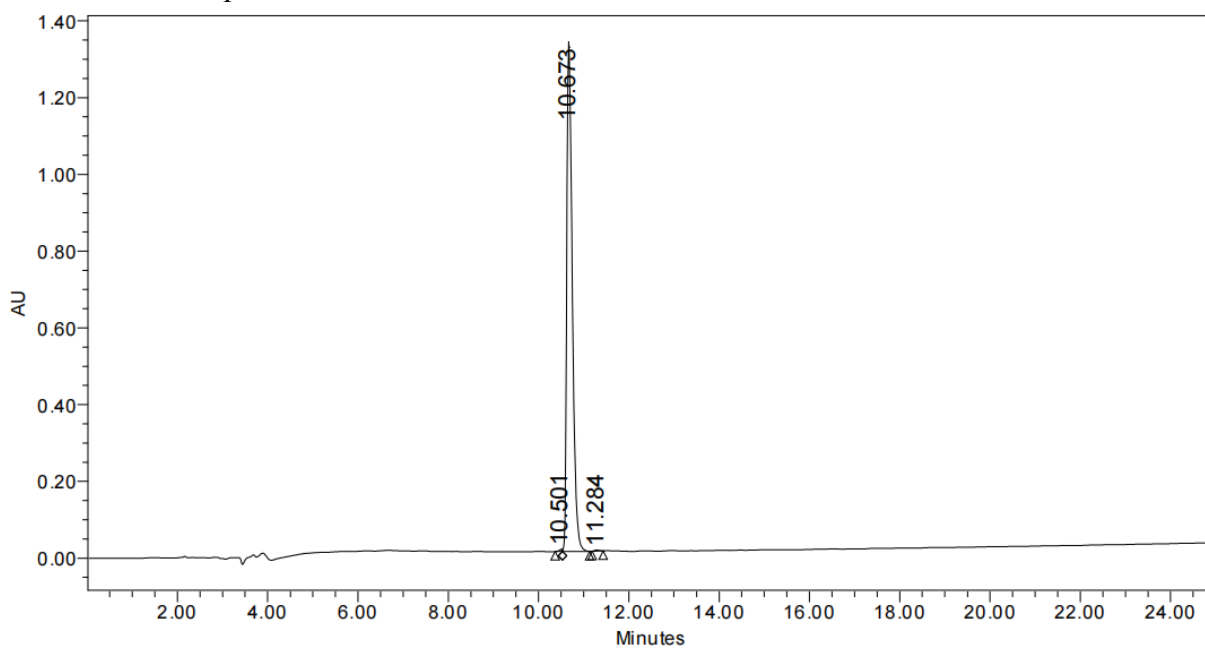
Certified by: QA Date 05/19/2024

Note: this product is intended for research use only; not for diagnostic or human use.

Sample Information

Name : BPC-157
Cas No : 137525-51-0
Sequence : H-Gly-Glu-Pro-Pro-Pro-Gly-Lys-Pro-Ala-Asp-Asp-Ala-Gly-Leu-Val-OH
Pump A : 0.1% Trifluoroacetic in 100% Water
Pump B : 0.1% Trifluoroacetic in 100% Acetonitrile
Total Flow : 1ml/min
Wavelength : 220nm
Analytical column type : SHIMADZU Inertsil ODS-SP (4.6*250mm*5um)
Inj. Volume : 10ul

Time	Module	Action	Value
0.00	Pumps	B.Conc	5
25.00	Pumps	B.Conc	65
25.01	Pumps	B.Conc	100

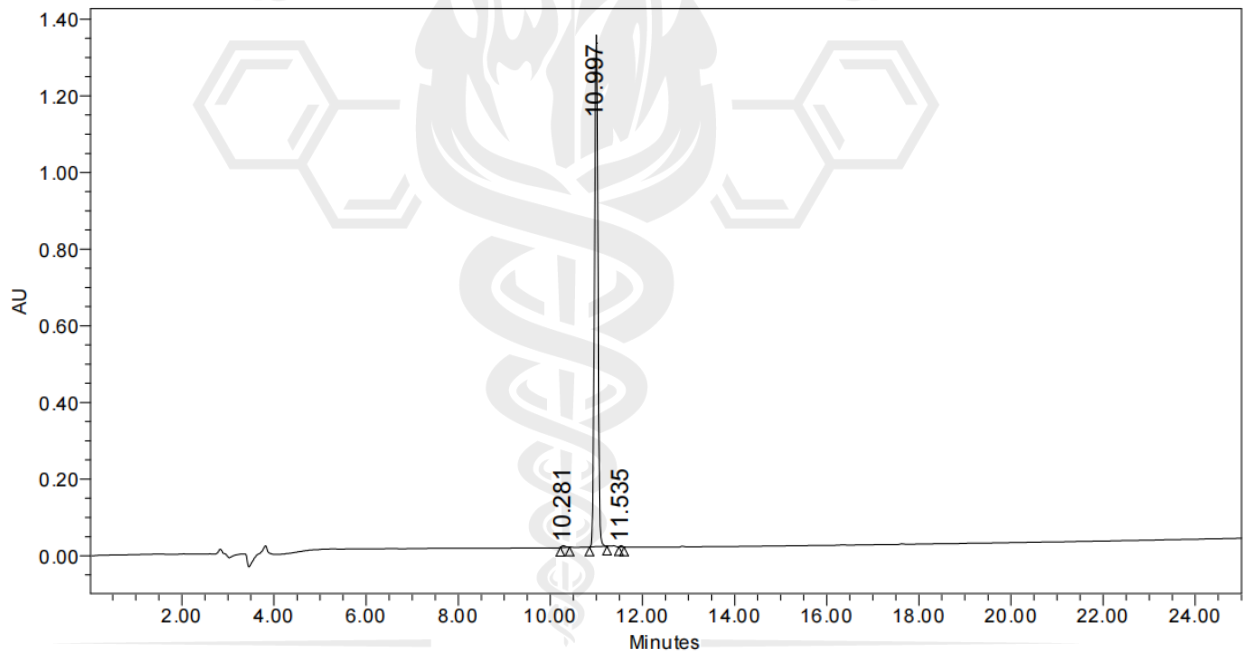


	RT	Area	% Area	Height
1	10.501	27704	0.24	5375
2	10.673	11268294	99.59	1335306
3	11.284	18972	0.17	2523

Sample Information

Name : Thymosin- β -4
Cas No : 77591-33-4
Sequence : Ac-Ser-Asp-Lys-Pro-Asp-Met-Ala-Glu-Ile-Glu-Lys-Phe-Asp-Lys-Ser-Lys-Leu-Lys-Lys-Thr-Glu-Thr-Gln-Glu-Lys-Asn-Pro-Leu-Pro-Ser-Lys-Glu-Thr-Ile-Glu-Gln-Glu-Lys-Gln-Ala-Gly-Glu-Ser-OH
Pump A : 0.1% Trifluoroacetic in 100% Water
Pump B : 0.1% Trifluoroacetic in 100% Acetonitrile
Total Flow : 1ml/min
Wavelength : 220nm
Analytical column type : SHIMADZU Inertsil ODS-SP (4.6*250mm*5 μ m)
Inj. Volume : 20ul

Time	Module	Action	Value
0.00	Pumps	B.Conc	5
25.00	Pumps	B.Conc	65
25.01	Pumps	B.Conc	100



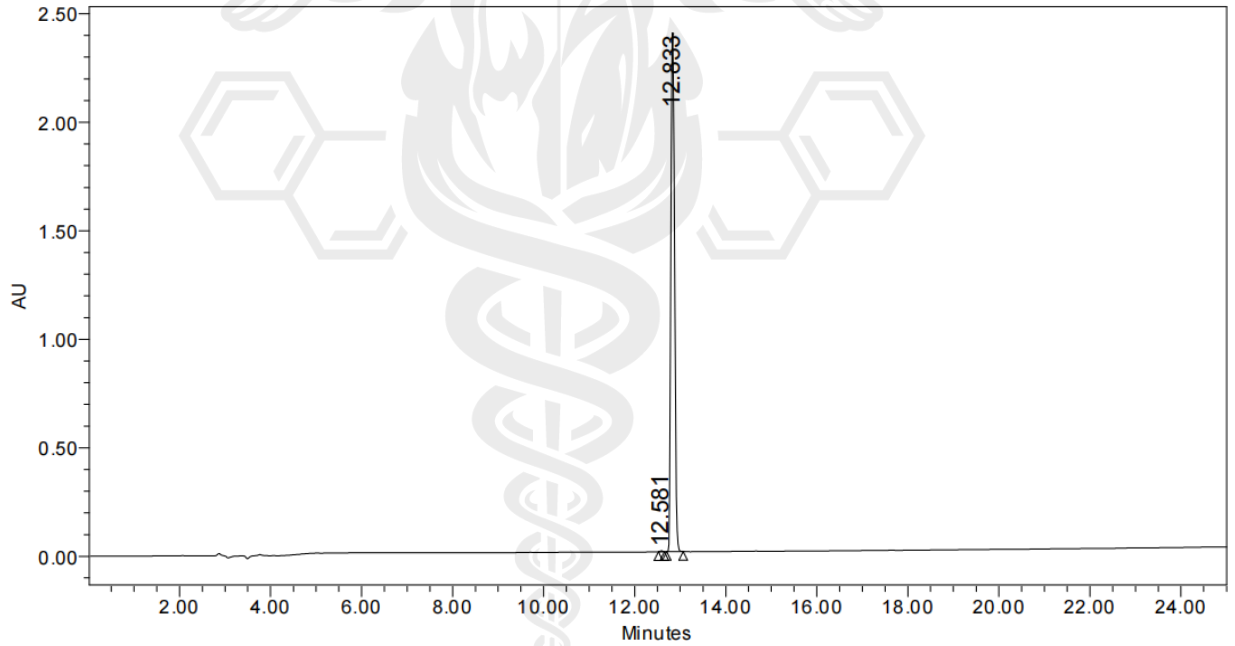
	RT	Area	% Area	Height
1	10.281	23630	0.34	4343
2	10.997	6835319	99.49	1319547
3	11.535	11366	0.17	3111

SOVEREIGN HEALTH AND PERFORMANCE

Sample Information

Name : Ipamorelin
Sequence : Aib-His-D-2-Nal-D-Phe-Lys-NH2
CAS NO. : 170851-70-4
Pump A : 0.1% Trifluoroacetic in 100% Water
Pump B : 0.1% Trifluoroacetic in 100% Acetonitrile
Total Flow : 1ml/min
Wavelength : 220nm
Analytical column type : SHIMADZU Inertsil ODS-SP (4.6*250mm*5um)
Inj. Volume : 5ul

Time	Module	Action	Value
0.00	Pumps	B.Conc	5
25.00	Pumps	B.Conc	65
25.01	Pumps	B.Conc	100

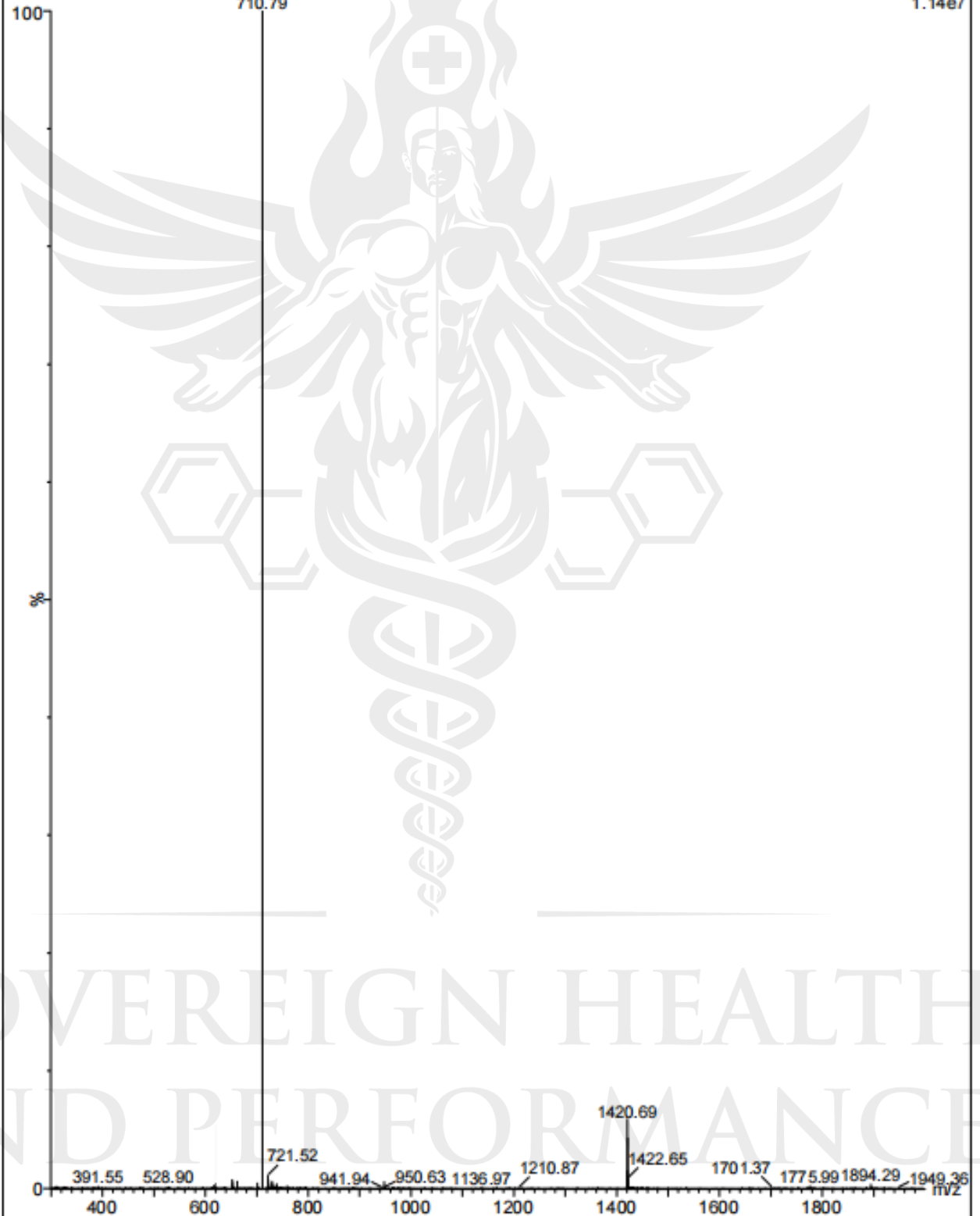


	RT	Area	% Area	Height
1	12.581	14690	0.11	3966
2	12.833	13871225	99.89	2410906

SOVEREIGN HEALTH
AND PERFORMANCE

BPC-157 6 (0.092)

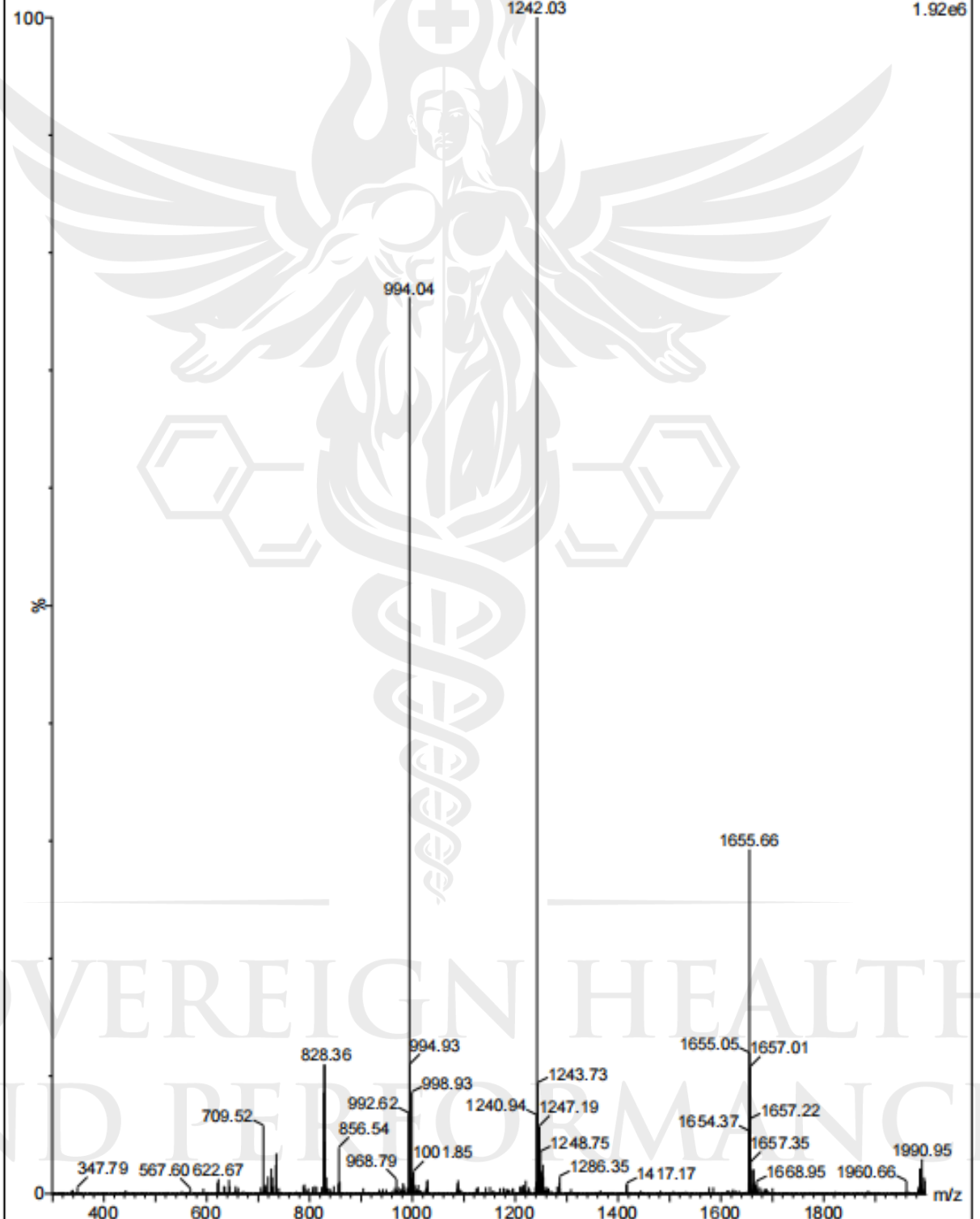
Scan ES+
1.14e7



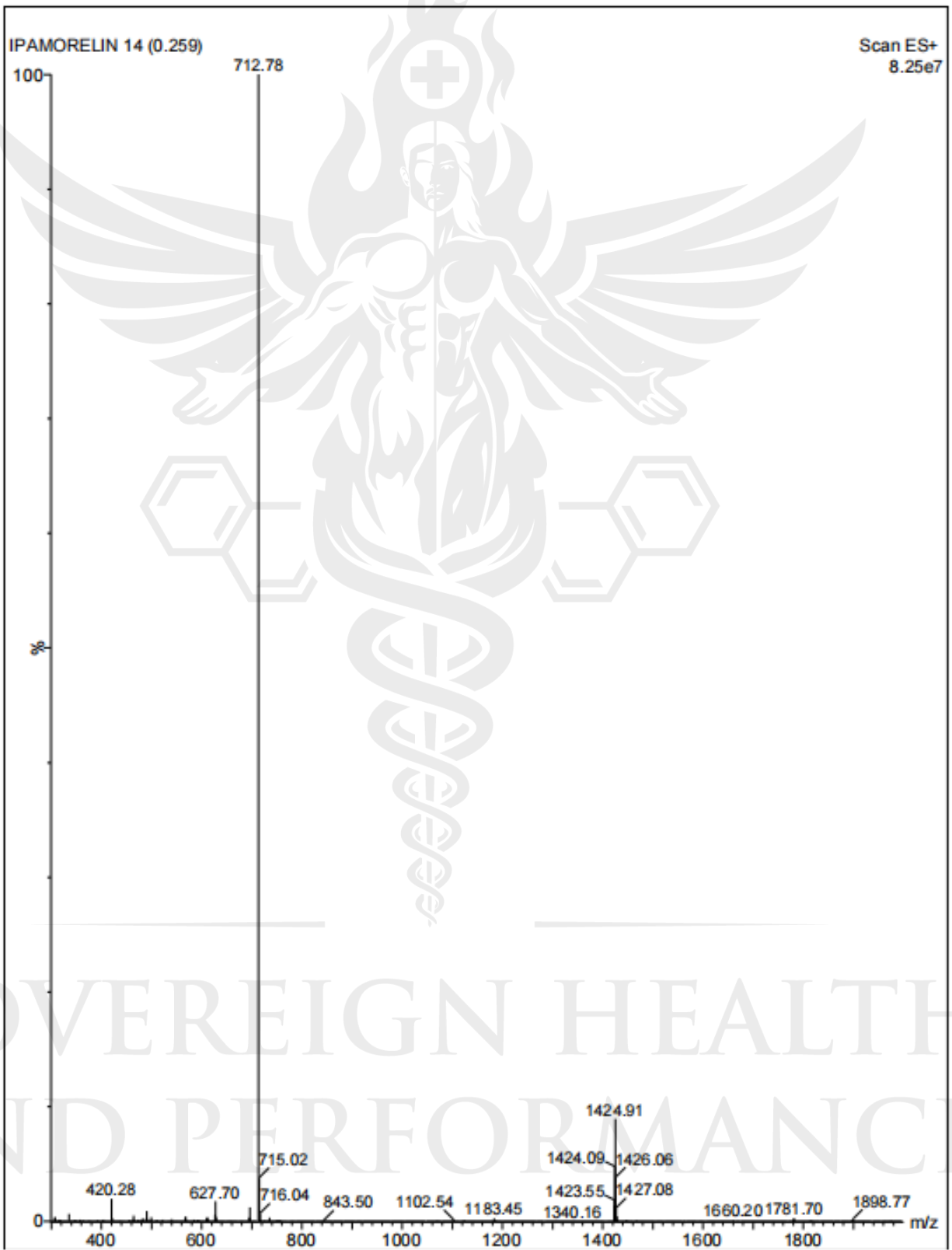
SOVEREIGN HEALTH
AND PERFORMANCE

THYMOSIN-TEBA-4 23 (0.425)

Scan ES+
1.92e6



SOVEREIGN HEALTH
AND PERFORMANCE



SOVEREIGN HEALTH AND PERFORMANCE