
CERTIFICATE OF ANALYSIS

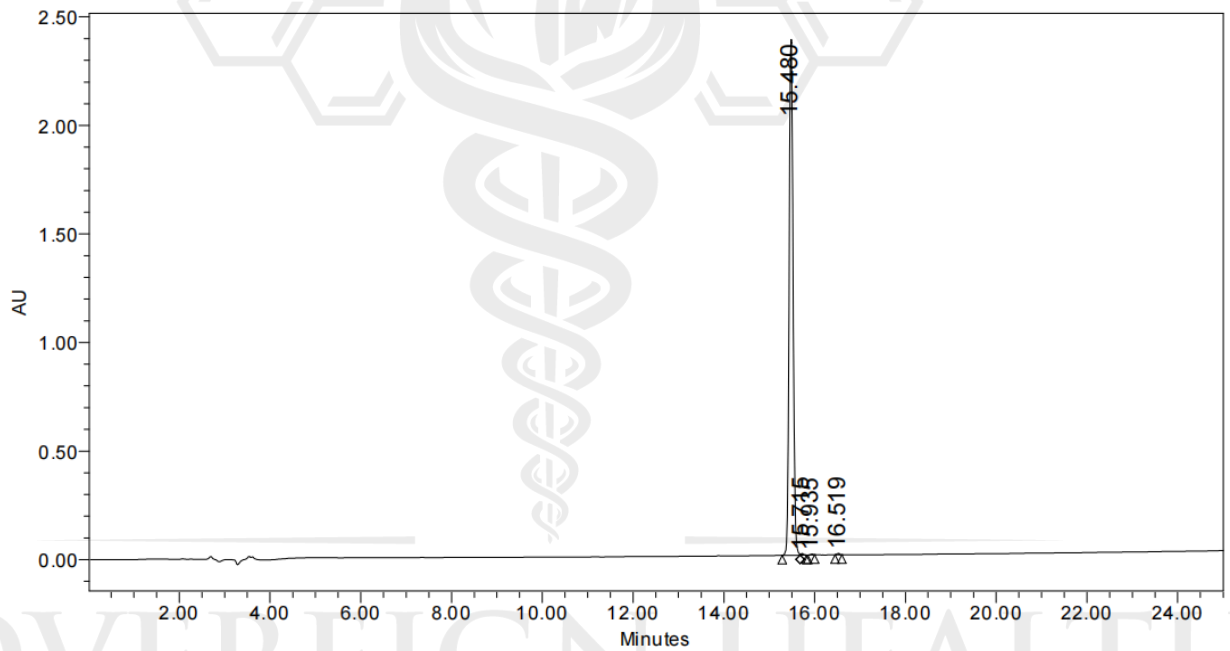
Product Name	CJC-1295 and Ipamorelin-blend	
Sequence	CJC-1295 : H-Tyr-D-Ala-Asp-Ala-Ile-Phe-Thr-Gln-Ser-Tyr-Arg-Lys-Val-Leu-Ala-Gln-Leu-Ser-Ala-Arg-Lys-Leu-Leu-Gln-Asp-Ile-Leu-Ser-Arg-NH2 Ipamorelin : Aib-His-D-2-Nal-D-Phe-Lys-NH2	
Dissolution condition	5%ACN+95%H2O	
CAS NO.	863288-34-0, 170851-70-4	
Batch	CJCIPAE124	
Molecular Weight (MW)	3367.90±1.0, 711.85±1.0	
Storage	-20℃	
Test Items	Specifications	Results
Purity by HPLC	≥99.0%	99.53% (CJC-1295) 99.89% (Ipamorelin)
Endotoxin	< 50.0EU/mg	Conforms
Moisture content	<8.0%	4.8%
Acetic acid content	< 15.0%	7.1%
Appearance	White to off-white lyophilized powder	Conforms
Quantity	120vials (5.0+5.0mg/vial)	120vials
Certified by: QA	Date	05/19/2024

Note: this product is intended for research use only; not for diagnostic or human use.

Sample Information

Name : CJC-1295
Cas No : 863288-34-0
Sequence : H-Tyr-D-Ala-Asp-Ala-Ile-Phe-Thr-Gln-Ser-Tyr-Arg-Lys-Val-Leu-Ala-Gln
-Leu-Ser-Ala-Arg-Lys-Leu-Leu-Gln-Asp-Ile-Leu-Ser-Arg-NH2
Pump A : 0.1% Trifluoroacetic in 100% Water
Pump B : 0.1% Trifluoroacetic in 100% Acetonitrile
Total Flow : 1ml/min
Wavelength : 220nm
Analytical column type : SHIMADZU Inertsil ODS-SP (4.6*250mm*5um)
Inj. Volume : 5ul

Time	Module	Action	Value
0.00	Pumps	B.Conc	10
25.00	Pumps	B.Conc	70
25.01	Pumps	B.Conc	100

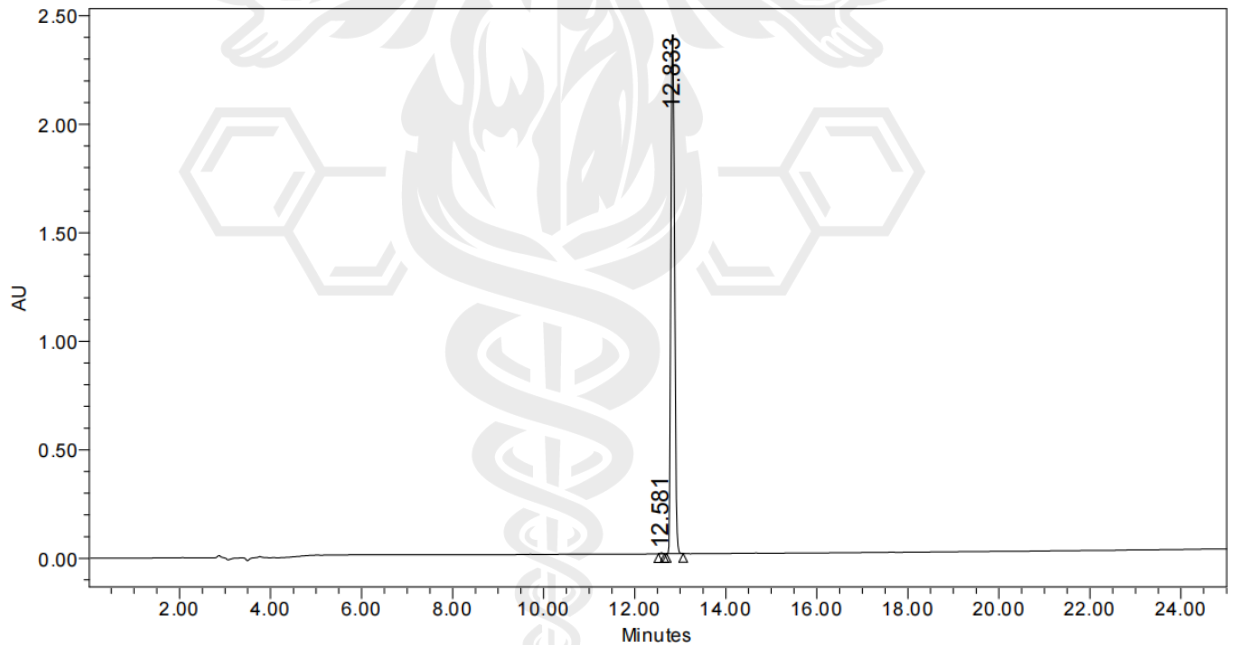


	RT	Area	% Area	Height
1	15.480	14426475	99.53	2377245
2	15.715	28521	0.20	6386
3	15.935	11825	0.08	2826
4	16.519	27729	0.19	6474

Sample Information

Name : Ipamorelin
Sequence : Aib-His-D-2-Nal-D-Phe-Lys-NH2
CAS NO. : 170851-70-4
Pump A : 0.1% Trifluoroacetic in 100% Water
Pump B : 0.1% Trifluoroacetic in 100% Acetonitrile
Total Flow : 1ml/min
Wavelength : 220nm
Analytical column type : SHIMADZU Inertsil ODS-SP (4.6*250mm*5um)
Inj. Volume : 5ul

Time	Module	Action	Value
0.00	Pumps	B.Conc	5
25.00	Pumps	B.Conc	65
25.01	Pumps	B.Conc	100

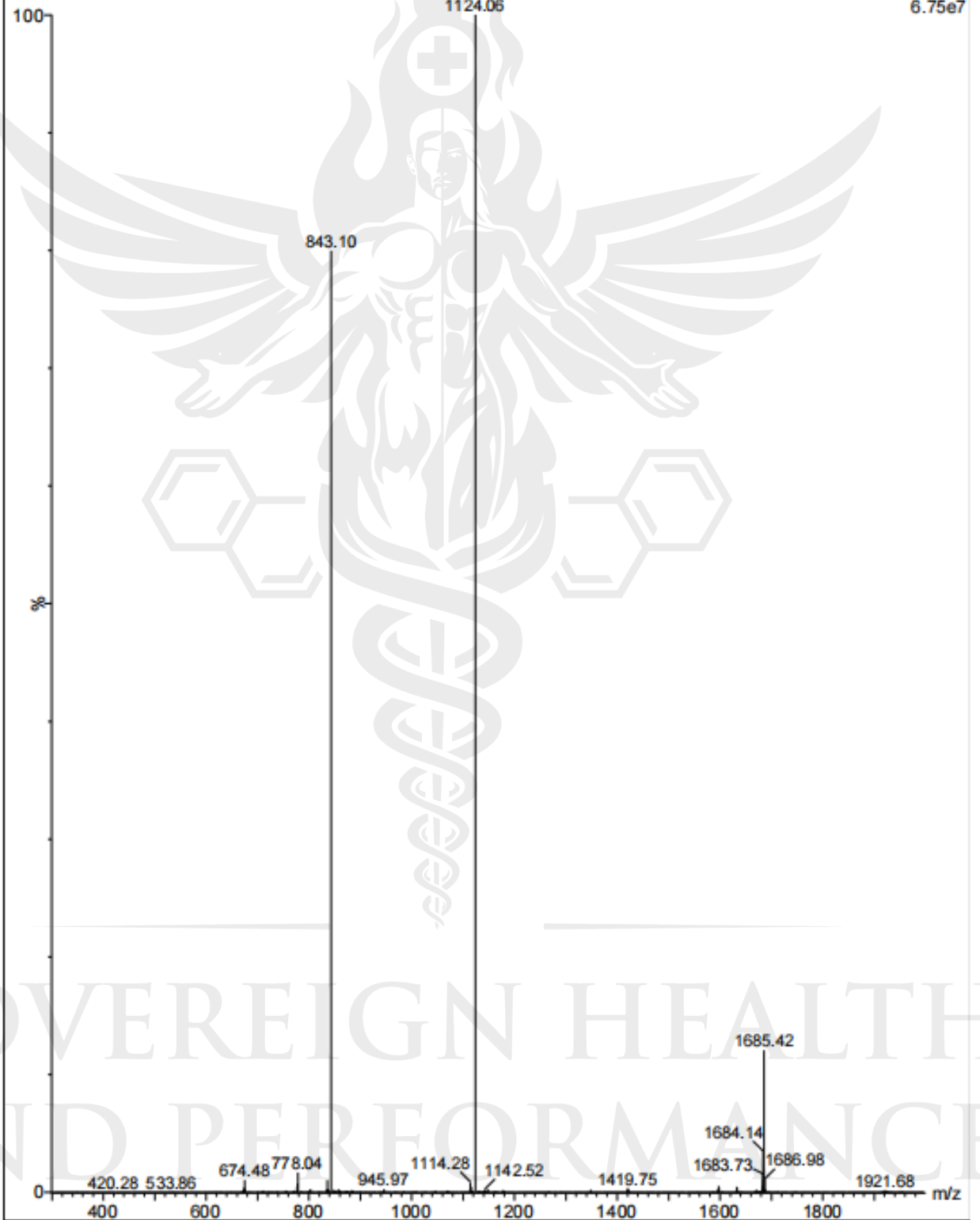


	RT	Area	% Area	Height
1	12.581	14690	0.11	3966
2	12.833	13871225	99.89	2410906

SOVEREIGN HEALTH
AND PERFORMANCE

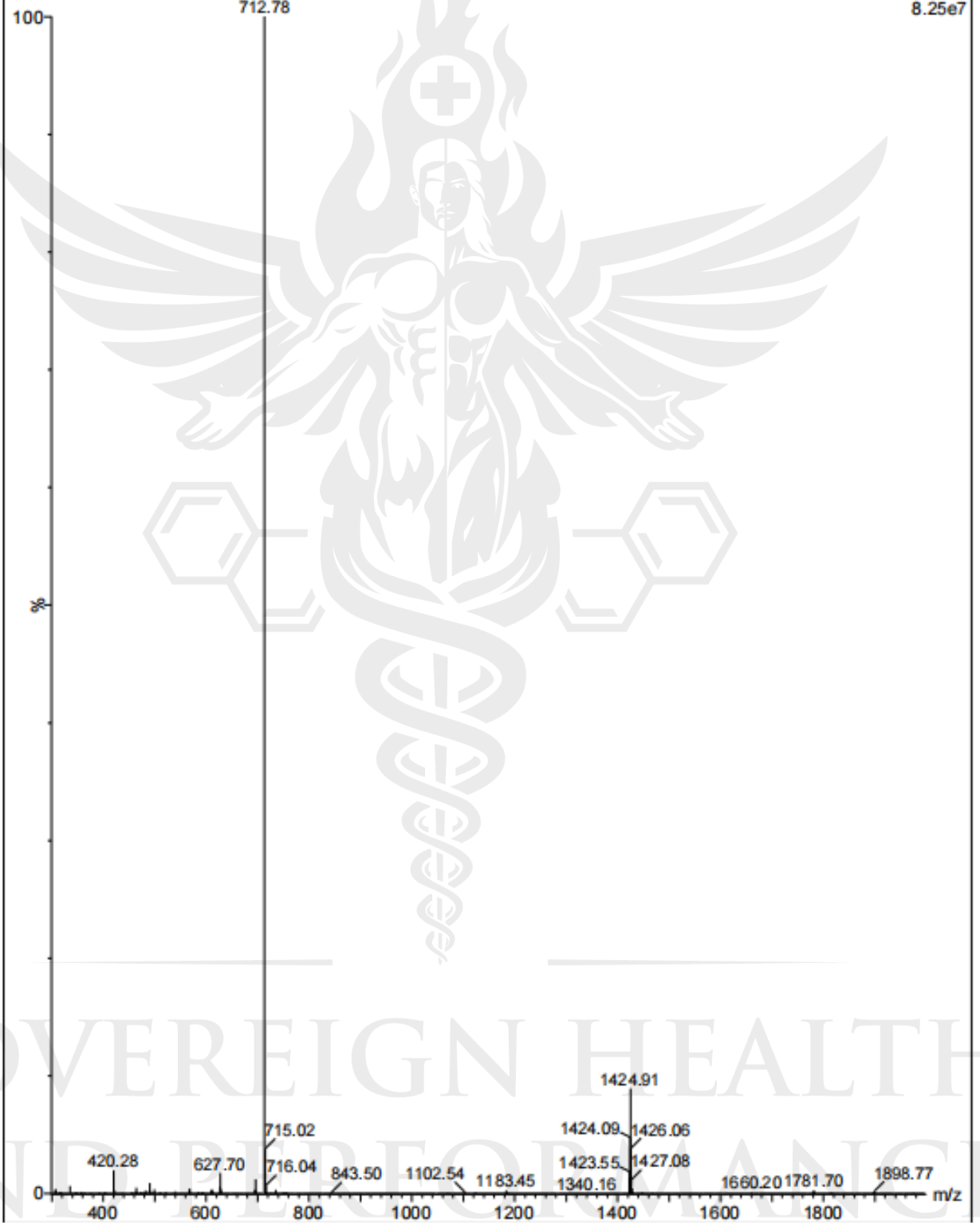
CJC-1295 8 (0.148)

Scan ES+
6.75e7



IPAMORELIN 14 (0.259)

Scan ES+
8.25e7



SOVEREIGN HEALTH
AND PERFORMANCE