
CERTIFICATE OF ANALYSIS

| | |
|------------------------------|---|
| Product Name | Tesamorelin |
| Cas No | 804475-66-9 |
| Sequence | Unk-Tyr-Ala-Asp-Ala-Ile-Phe-Thr-Asn-Ser-Tyr-Arg-Lys-V al-Leu-Gly-Gln-Leu-Ser-Ala-Arg-Lys-Leu-Leu-Gln-Asp-Il e-Met-Ser-Arg-Gln-Gln-Gly-Glu-Ser-Asn-Gln-Glu-Arg-Gl y-Ala-Arg-Ala-Arg-Leu-NH2 |
| Dissolution condition | 20%ACN+80%H2O |
| Length | 44AA |
| Batch | TESE124 |
| Molecular Weight (MW) | 5135.90±1 |
| Storage | -20°C |

| Test Items | Specifications | Results |
|----------------------------|---------------------------------------|----------------|
| Purity by HPLC | ≥99.0% | 99.42% |
| Peptide Content | N/A | N/A |
| Moisture content | ≤10.0% | 4.2% |
| Acetic acid content | ≤8.0% | 3.7% |
| Appearance | White to off-white lyophilized powder | Conforms |
| Quantity | 5.0mg/vial | 5.0mg/vial |

**Certified by:
Quality Assurance
Department**

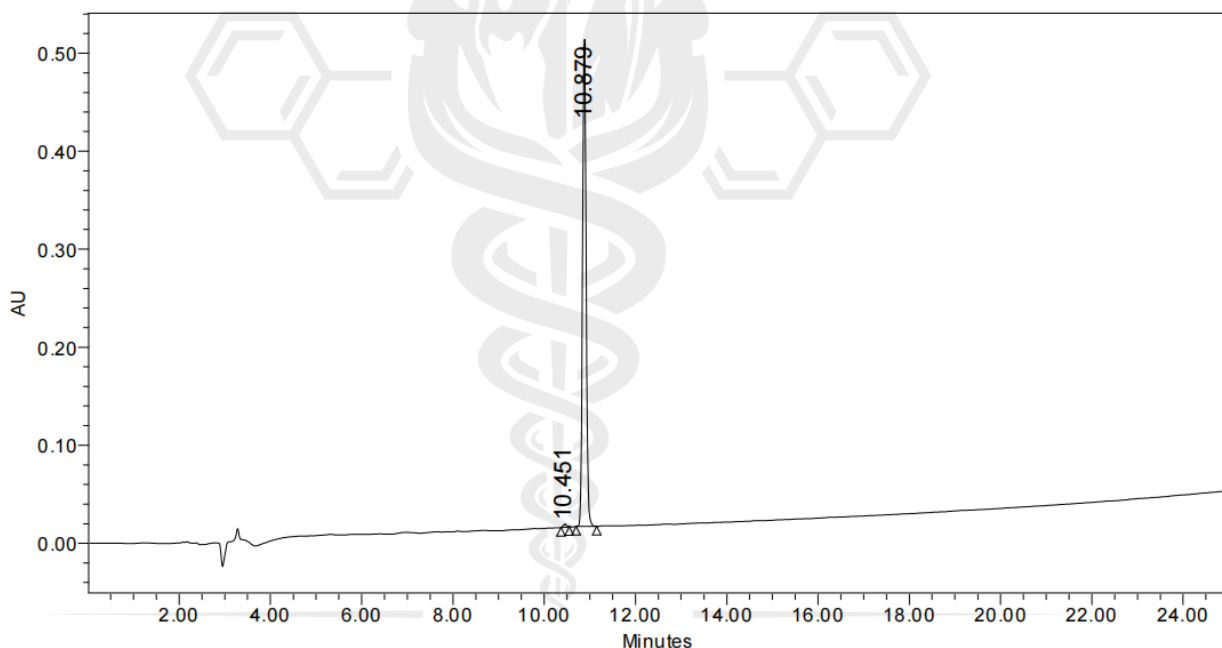
Date 05/19/2024

Note: this product is intended for research use only; not for diagnostic or human use.

Sample Information

Name : Tesamorelin
Sequence : Unk-Tyr-Ala-Asp-Ala-Ile-Phe-Thr-Asn-Ser-Tyr-Arg-Lys-Val-Leu-Gly-Gln
-Leu-Ser-Ala-Arg-Lys-Leu-Leu-Gln-Asp-Ile-Met-Ser-Arg-Gln-Gln-Gly-Glu
u-Ser-Asn-Gln-Glu-Arg-Gly-Ala-Arg-Ala-Arg-Leu-NH2
Cas No : 804475-66-9
Pump A : 0.1% Trifluoroacetic in 100% Water
Pump B : 0.1% Trifluoroacetic in 100% Acetonitrile
Total Flow : 1ml/min
Wavelength : 220nm
Analytical column type : SHIMADZU Inertsil ODS-SP (4.6*250mm*5um)
Inj. Volume : 5ul

| Time | Module | Action | Value |
|-------|--------|--------|-------|
| 0.00 | Pumps | B.Conc | 20 |
| 25.00 | Pumps | B.Conc | 80 |
| 25.01 | Pumps | B.Conc | 100 |

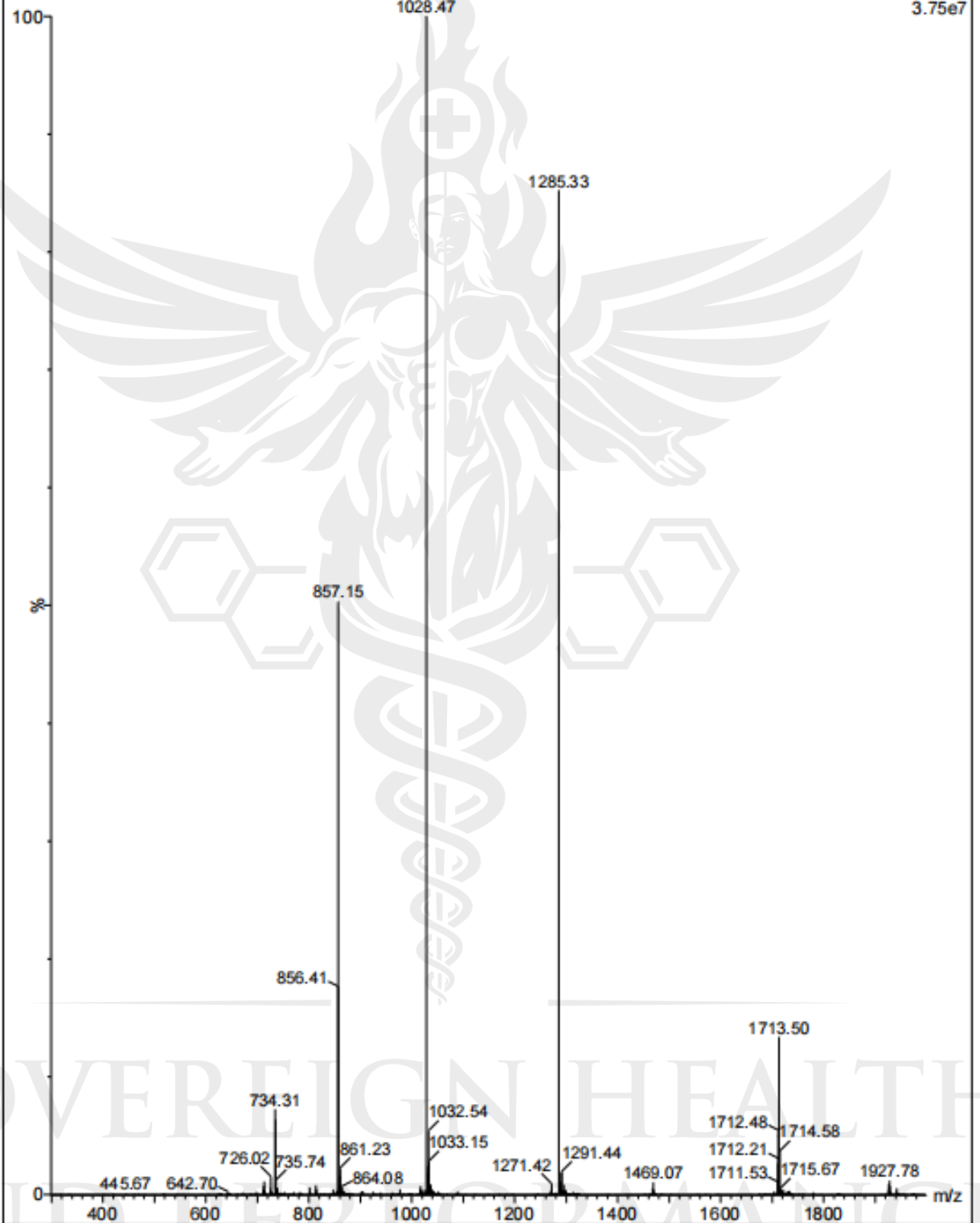


| | RT | Area | % Area | Height |
|---|--------|---------|--------|--------|
| 1 | 10.451 | 15837 | 0.58 | 2997 |
| 2 | 10.879 | 2714016 | 99.42 | 494238 |

SOVEREIGN HEALTH AND PERFORMANCE

TESAMORELIN 16 (0.296)

Scan ES+
3.75e7



SOVEREIGN HEALTH
AND PERFORMANCE